

Epiberberine

Chemical Properties

CAS No. : 6873-09-2

Formula: C₂₀H₁₈NO₄

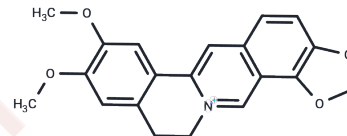
Molecular Weight: 336.36

Keep away from direct sunlight, Keep away from moisture

Storage:

Powder: -20°C for 3 years | In solvent: -80°C for 1 year

Actual storage temperature shall be subject to the COA.



Biological Description

Description	1. Epiberberine may be caused drug interactions based on CYP2D6 enzyme. 2. Epiberberine has anti-adipogenic effect is mediated by downregulation of the Raf/MEK1/ERK1/2 and AMPKα/Akt pathways during 3T3-L1 adipocyte differentiation. 3. Epiberberine, as the brightest FSA emitter among the alkaloids, can also serve as an efficient conformation probe for HTG DNA and discriminate the DNA G-quadruplex from the RNA counterpart.
Targets(IC50)	ERK, Beta-Secretase, MEK, BACE, AMPK, AChR, Cholinesterase (ChE)

Solubility Information

Solubility	DMSO: 3.38 mg/mL (10.05 mM), Sonication is recommended. Chloroform, Dichloromethane, Ethyl Acetate, Acetone, etc.: Soluble, (< 1 mg/ml refers to the product slightly soluble or insoluble)
------------	---

Preparing Stock Solutions

	1mg	5mg	10mg
1 mM	2.973 mL	14.865 mL	29.7301 mL
5 mM	0.5946 mL	2.973 mL	5.946 mL
10 mM	0.2973 mL	1.4865 mL	2.973 mL
50 mM	0.0595 mL	0.2973 mL	0.5946 mL

Please select the appropriate solvent to prepare the stock solution, according to the solubility of the product in different solvents. Please use it as soon as possible.

Note: The dilution table applies only to solid products. For liquid products, please calculate the stock solution based on the stated concentration and/or density.

Reference

Zou Z Y , Hu Y R , Ma H , et al. Epiberberine reduces serum cholesterol in diet-induced dyslipidemia Syrian golden hamsters via network pathways involving cholesterol metabolism.[J]. European Journal of Pharmacology, 2016, 774:1-9.

Inhibitor · Natural Compounds · Compound Libraries · Recombinant Proteins

This product is for Research Use Only· Not for Human or Veterinary or Therapeutic Use

Tel:781-999-4286 E_mail:info@targetmol.com Address:34 Washington Street,Wellesley Hills,MA 02481