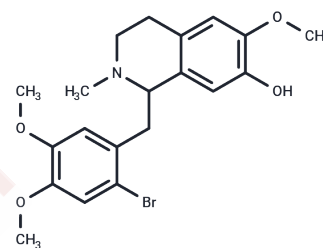


A 69024

Chemical Properties

CAS No. : 58939-37-0
 Formula: C₂₀H₂₄BrNO₄
 Molecular Weight: 422.31
 Storage: Powder: -20°C for 3 years | In solvent: -80°C for 1 year
Actual storage temperature shall be subject to the COA.



Biological Description

Description	A 69024 is a highly selective antagonist of dopamine D-1 receptor.
Targets(IC50)	Others,Dopamine Receptor

Preparing Stock Solutions

	1mg	5mg	10mg
1 mM	2.3679 mL	11.8396 mL	23.6793 mL
5 mM	0.4736 mL	2.3679 mL	4.7359 mL
10 mM	0.2368 mL	1.184 mL	2.3679 mL
50 mM	0.0474 mL	0.2368 mL	0.4736 mL

Please select the appropriate solvent to prepare the stock solution, according to the solubility of the product in different solvents. Please use it as soon as possible.

Note: The dilution table applies only to solid products. For liquid products, please calculate the stock solution based on the stated concentration and/or density.

Reference

Kassiou M, Loc'h C, Bottlaender M, Mardon K, Ottaviani M, Coulon C, Katsifis A, Maziere B. (+)-[76Br]A-69024: a non-benzazepine radioligand for studies of dopamine D1 receptors using PET. Nucl Med Biol. 2002 Apr;29(3):295-302. PubMed PMID: 11929698.

Kassiou M, Mardon K, Mattner F, Katsifis A, Dikic B. Pharmacological evaluation of (+)-2- [123I]A-69024: a radioligand for in vivo studies of dopamine D1 receptors. Life Sci. 2001 Jun 29;69(6):669-75. PubMed PMID: 11476188.

Kerkman DJ, Ackerman M, Artman LD, MacKenzie RG, Johnson MC, Bednarz L, Montana W, Asin KE, Stampfli H, Keabian JW. A-69024: a non-benzazepine antagonist with selectivity for the dopamine D-1 receptor. Eur J Pharmacol. 1989 Aug 3;166(3):481-91. PubMed PMID: 2509217.

Criswell HE, Mueller RA, Breese GR. Pharmacologic evaluation of SCH-39166, A-69024, NO-0756, and SCH-23390 in neonatal-6-OHDA-lesioned rats. Further evidence that self-mutilatory behavior induced by L-dopa is related to D1 dopamine receptors. Neuropsychopharmacology. 1992 Sep;7(2):95-103. PubMed PMID: 1418306.

Inhibitor · Natural Compounds · Compound Libraries · Recombinant Proteins

This product is for Research Use Only · Not for Human or Veterinary or Therapeutic Use

Tel:781-999-4286 E_mail:info@targetmol.com Address:34 Washington Street,Wellesley Hills,MA 02481