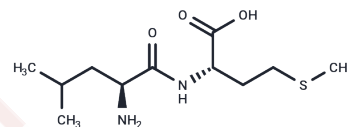


## Leucylmethionine

## Chemical Properties

CAS No. :	36077-39-1
Formula:	C <sub>11</sub> H <sub>22</sub> N <sub>2</sub> O <sub>3</sub> S
Molecular Weight:	262.37
Storage:	Powder: -20°C for 3 years   In solvent: -80°C for 1 year Actual storage temperature shall be subject to the COA.



## Biological Description

Description	Leucylmethionine is a substrate for aminopeptidase M.
Targets(IC50)	Others

## Preparing Stock Solutions

	1mg	5mg	10mg
1 mM	3.8114 mL	19.0571 mL	38.1141 mL
5 mM	0.7623 mL	3.8114 mL	7.6228 mL
10 mM	0.3811 mL	1.9057 mL	3.8114 mL
50 mM	0.0762 mL	0.3811 mL	0.7623 mL

Please select the appropriate solvent to prepare the stock solution, according to the solubility of the product in different solvents. Please use it as soon as possible.

Note: The dilution table applies only to solid products. For liquid products, please calculate the stock solution based on the stated concentration and/or density.

## Reference

- Schmitz J, Furtmann N, Ponert M, Frizler M, Löser R, Bartz U, Bajorath J, Gütschow M. Active Site Mapping of Human Cathepsin F with Dipeptide Nitrile Inhibitors. *ChemMedChem*. 2015 Aug;10(8):1365-77. doi: 10.1002/cmdc.201500151. Epub 2015 Jun 26. PubMed PMID: 26119278.
- Karvonen J, Kauma H, Päivänsalo M, Kesäniemi YA. Paraoxonase-1 gene Leu-Met55 and Gln-Arg192 polymorphisms are not associated with carotid artery atherosclerosis in a population-based cohort. *Eur J Cardiovasc Prev Rehabil*. 2004 Dec;11(6):511-2. PubMed PMID: 15580063.
- Nakanishi M, Moriyama A, Narita Y, Sasaki M. Aminopeptidase M from human liver. II. Kinetic analysis of inhibition of the enzyme by bile acids. *J Biochem*. 1989 Nov;106(5):826-30. PubMed PMID: 2575613.
- Noguerola AS, Murugaverl B, Voorhees KJ. An investigation of dipeptides containing polar and nonpolar side groups by curie-point pyrolysis tandem mass spectrometry. *J Am Soc Mass Spectrom*. 1992 Oct;3(7):750-6. doi: 10.1016/1044-0305(92)87088-G. PubMed PMID: 24234642.

**Inhibitor · Natural Compounds · Compound Libraries · Recombinant Proteins**

This product is for Research Use Only · Not for Human or Veterinary or Therapeutic Use

Tel:781-999-4286 E\_mail:info@targetmol.com Address:34 Washington Street,Wellesley Hills,MA 02481