

BADGE

Chemical Properties

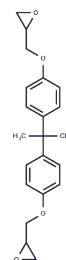
CAS No. : 1675-54-3

Formula: C₂₁H₂₄O₄

Molecular Weight: 340.41

Storage: Pure form: -20°C for 3 years | In solvent: -80°C for 1 year

Actual storage temperature shall be subject to the COA.



Biological Description

Description	Bisphenol a diglycidyl ether is a Standardized Chemical Allergen. The physiologic effect of bisphenol a diglycidyl ether is by means of Increased Histamine Release, and Cell-mediated Immunity.
Targets(IC50)	PPAR

Solubility Information

Solubility	DMSO: 22.5 mg/mL (66.1 mM),Sonication is recommended. (< 1 mg/ml refers to the product slightly soluble or insoluble)
------------	--

Preparing Stock Solutions

	1mg	5mg	10mg
1 mM	2.9376 mL	14.6882 mL	29.3763 mL
5 mM	0.5875 mL	2.9376 mL	5.8753 mL
10 mM	0.2938 mL	1.4688 mL	2.9376 mL
50 mM	0.0588 mL	0.2938 mL	0.5875 mL

Please select the appropriate solvent to prepare the stock solution, according to the solubility of the product in different solvents. Please use it as soon as possible.

Note: The dilution table applies only to solid products. For liquid products, please calculate the stock solution based on the stated concentration and/or density.

Inhibitor · Natural Compounds · Compound Libraries · Recombinant Proteins

This product is for Research Use Only · Not for Human or Veterinary or Therapeutic Use

Tel:781-999-4286 E_mail:info@targetmol.com Address:34 Washington Street,Wellesley Hills,MA 02481