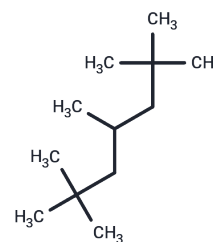


## 2,2,4,6,6-pentamethylheptane

## Chemical Properties

CAS No. :	13475-82-6
Formula:	C <sub>12</sub> H <sub>26</sub>
Molecular Weight:	170.34
Storage:	Pure form: -20°C for 3 years   In solvent: -80°C for 1 year Actual storage temperature shall be subject to the COA.



## Biological Description

Description	2,2,4,6,6-pentamethylheptane is a highly branched saturated hydrocarbon used in organic synthesis and biochemical experiments.
Targets(IC50)	Others

## Preparing Stock Solutions

	1mg	5mg	10mg
1 mM	5.8706 mL	29.3531 mL	58.7061 mL
5 mM	1.1741 mL	5.8706 mL	11.7412 mL
10 mM	0.5871 mL	2.9353 mL	5.8706 mL
50 mM	0.1174 mL	0.5871 mL	1.1741 mL

Please select the appropriate solvent to prepare the stock solution, according to the solubility of the product in different solvents. Please use it as soon as possible.

Note: The dilution table applies only to solid products. For liquid products, please calculate the stock solution based on the stated concentration and/or density.

## Reference

Tolls J, et al. Bioconcentration of n-dodecane and its highly branched isomer 2,2,4,6,6-pentamethylheptane in fathead minnows. Chemosphere. 2002 Jun;47(10):1049-57.

Inhibitor · Natural Compounds · Compound Libraries · Recombinant Proteins

This product is for Research Use Only · Not for Human or Veterinary or Therapeutic Use

Tel:781-999-4286 E\_mail:info@targetmol.com Address:34 Washington Street,Wellesley Hills,MA 02481