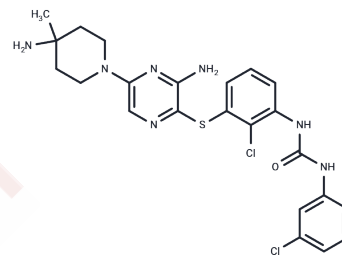


SHP2-IN-34

Chemical Properties

CAS No. : 2924065-12-1
 Formula: C₂₃H₂₅Cl₂N₇O₅
 Molecular Weight: 518.46
 Storage: Powder: -20°C for 3 years | In solvent: -80°C for 1 year
Actual storage temperature shall be subject to the COA.



Biological Description

Description	SHP2-IN-34 (compound A8) is a phenylurea SHP2 inhibitor with anti-cancer properties. It significantly suppresses tumor growth in CT26 mouse models.
Targets(IC50)	Others,Phosphatase

Preparing Stock Solutions

	1mg	5mg	10mg
1 mM	1.9288 mL	9.6439 mL	19.2879 mL
5 mM	0.3858 mL	1.9288 mL	3.8576 mL
10 mM	0.1929 mL	0.9644 mL	1.9288 mL
50 mM	0.0386 mL	0.1929 mL	0.3858 mL

Please select the appropriate solvent to prepare the stock solution, according to the solubility of the product in different solvents. Please use it as soon as possible.

Note: The dilution table applies only to solid products. For liquid products, please calculate the stock solution based on the stated concentration and/or density.

Inhibitor · Natural Compounds · Compound Libraries · Recombinant Proteins

This product is for Research Use Only · Not for Human or Veterinary or Therapeutic Use

Tel:781-999-4286 E_mail:info@targetmol.com Address:34 Washington Street,Wellesley Hills,MA 02481