

## MAPI

## Chemical Properties

CAS No. : 1260620-30-1

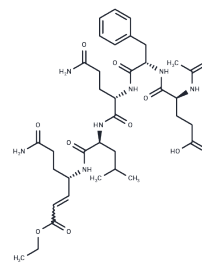
Formula: C<sub>36</sub>H<sub>53</sub>N<sub>7</sub>O<sub>11</sub>

Molecular Weight: 759.85

Keep away from moisture

Storage: Powder: -20°C for 3 years | In solvent: -80°C for 1 year

Actual storage temperature shall be subject to the COA.



## Biological Description

Description	MAPI is an irreversible peptidyl 3C cysteine protease (SV3CP) inhibitor. By covalently attaching its C-terminal Michael acceptor moiety to the active site thiol of SV3CP Cys 139, MAPI inhibits SV3CP. It shows potential for use in the study of norovirus infections.
Targets(IC50)	Virus Protease

## Preparing Stock Solutions

	1mg	5mg	10mg
1 mM	1.316 mL	6.5802 mL	13.1605 mL
5 mM	0.2632 mL	1.316 mL	2.6321 mL
10 mM	0.1316 mL	0.658 mL	1.316 mL
50 mM	0.0263 mL	0.1316 mL	0.2632 mL

Please select the appropriate solvent to prepare the stock solution, according to the solubility of the product in different solvents. Please use it as soon as possible.

Note: The dilution table applies only to solid products. For liquid products, please calculate the stock solution based on the stated concentration and/or density.

Inhibitor · Natural Compounds · Compound Libraries · Recombinant Proteins

This product is for Research Use Only · Not for Human or Veterinary or Therapeutic Use

Tel:781-999-4286

E\_mail:info@targetmol.com

Address:34 Washington Street,Wellesley Hills,MA 02481