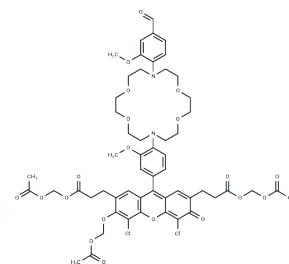


Asante potassium green-1 AM

Chemical Properties

CAS No. :	1369302-18-0
Formula:	C ₅₅ H ₆₂ Cl ₂ N ₂ O ₂₀
Molecular Weight:	1141.99
Storage:	Keep away from direct sunlight
	Store at -20°C
	Actual storage temperature shall be subject to the COA.



Biological Description

Description	Asante potassium green-1 AM is a membrane-permeable, acetoxymethyl (AM) ester-form fluorescent potassium indicator that emits in the yellow-green spectrum. Asante potassium green-1 AM is specifically tailored to measure dynamic changes in potassium ion concentrations in intracellular and extracellular environments characterized by high potassium concentrations, as it possesses a lower potassium binding affinity compared to other indicators like IPG-2 and IPG-4.
Targets(IC50)	Others

Preparing Stock Solutions

	1mg	5mg	10mg
1 mM	0.8757 mL	4.3783 mL	8.7566 mL
5 mM	0.1751 mL	0.8757 mL	1.7513 mL
10 mM	0.0876 mL	0.4378 mL	0.8757 mL
50 mM	0.0175 mL	0.0876 mL	0.1751 mL

Please select the appropriate solvent to prepare the stock solution, according to the solubility of the product in different solvents. Please use it as soon as possible.

Note: The dilution table applies only to solid products. For liquid products, please calculate the stock solution based on the stated concentration and/or density.

Reference

Rimmele TS, et al. A novel optical intracellular imaging approach for potassium dynamics in astrocytes. PLoS One. 2014 Oct 2;9(10):e109243.

Inhibitor · Natural Compounds · Compound Libraries · Recombinant Proteins

This product is for Research Use Only · Not for Human or Veterinary or Therapeutic Use

Tel:781-999-4286 E_mail:info@targetmol.com Address:34 Washington Street,Wellesley Hills,MA 02481