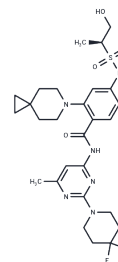


(S)-AM-9022

Chemical Properties

CAS No. : 2446872-47-3
 Formula: C₂₇H₃₆F₂N₆O₄S
 Molecular Weight: 578.67
 Storage: Powder: -20°C for 3 years | In solvent: -80°C for 1 year
 Actual storage temperature shall be subject to the COA.



Biological Description

Description	(S)-AM-9022 is the S-enantiomer of AM-9022, which is a potent and selective KIF18A inhibitor with oral bioavailability, applicable in cancer research.
Targets(IC50)	Microtubule Associated, Kinesin

Preparing Stock Solutions

	1mg	5mg	10mg
1 mM	1.7281 mL	8.6405 mL	17.281 mL
5 mM	0.3456 mL	1.7281 mL	3.4562 mL
10 mM	0.1728 mL	0.8641 mL	1.7281 mL
50 mM	0.0346 mL	0.1728 mL	0.3456 mL

Please select the appropriate solvent to prepare the stock solution, according to the solubility of the product in different solvents. Please use it as soon as possible.

Note: The dilution table applies only to solid products. For liquid products, please calculate the stock solution based on the stated concentration and/or density.

Inhibitor · Natural Compounds · Compound Libraries · Recombinant Proteins

This product is for Research Use Only · Not for Human or Veterinary or Therapeutic Use

Tel: 781-999-4286 E_mail: info@targetmol.com Address: 34 Washington Street, Wellesley Hills, MA 02481