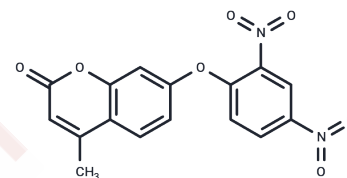


7-(2,4-Dinitrophenoxy)-4-methyl-2H-chromen-2-one

Chemical Properties

CAS No. :	314742-00-2
Formula:	C ₁₆ H ₁₀ N ₂ O ₇
Molecular Weight:	342.26
Storage:	Keep away from direct sunlight Powder: -20°C for 3 years In solvent: -80°C for 1 year <small>Actual storage temperature shall be subject to the COA.</small>



Biological Description

Description	7-(2,4-Dinitrophenoxy)-4-methyl-2H-chromen-2-one (Compound 1) serves as a fluorescent probe for detecting hydrogen sulfide (H ₂ S). It is characterized by a low detection limit (4×10 ⁻⁶ mol/L), high selectivity, and great sensitivity. At a concentration of 150 µg/mL, it exhibits negligible cytotoxicity. The excitation wavelength is 331 nm, while in DMSO solvent, it emits at approximately 385 nm; upon addition of HS ⁻ , the fluorescence intensity significantly increases around 392 nm.
Targets(IC50)	Others

Preparing Stock Solutions

	1mg	5mg	10mg
1 mM	2.9218 mL	14.6088 mL	29.2176 mL
5 mM	0.5844 mL	2.9218 mL	5.8435 mL
10 mM	0.2922 mL	1.4609 mL	2.9218 mL
50 mM	0.0584 mL	0.2922 mL	0.5844 mL

Please select the appropriate solvent to prepare the stock solution, according to the solubility of the product in different solvents. Please use it as soon as possible.

Note: The dilution table applies only to solid products. For liquid products, please calculate the stock solution based on the stated concentration and/or density.

Inhibitor · Natural Compounds · Compound Libraries · Recombinant Proteins

This product is for Research Use Only · Not for Human or Veterinary or Therapeutic Use

Tel: 781-999-4286 E_mail: info@targetmol.com Address: 34 Washington Street, Wellesley Hills, MA 02481