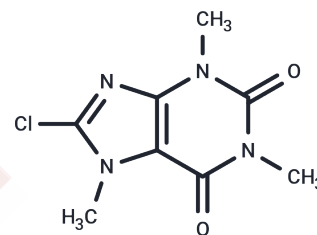


8-Chloro caffeine

Chemical Properties

CAS No. :	4921-49-7
Formula:	C ₈ H ₉ ClN ₄ O ₂
Molecular Weight:	228.64
Storage:	Powder: -20°C for 3 years In solvent: -80°C for 1 year Actual storage temperature shall be subject to the COA.



Biological Description

Description	8-Chloro caffeine binds to adenosine receptors with a K_i of 30 μ M. It enhances UV-induced chromosomal aberrations in the Cl-I type Chinese hamster embryo lung cells. 8-Chloro caffeine is a derivative of the methylxanthine alkaloid caffeine.
Targets(IC50)	Adenosine Receptor

Preparing Stock Solutions

	1mg	5mg	10mg
1 mM	4.3737 mL	21.8684 mL	43.7369 mL
5 mM	0.8747 mL	4.3737 mL	8.7474 mL
10 mM	0.4374 mL	2.1868 mL	4.3737 mL
50 mM	0.0875 mL	0.4374 mL	0.8747 mL

Please select the appropriate solvent to prepare the stock solution, according to the solubility of the product in different solvents. Please use it as soon as possible.

Note: The dilution table applies only to solid products. For liquid products, please calculate the stock solution based on the stated concentration and/or density.

Inhibitor · Natural Compounds · Compound Libraries · Recombinant Proteins

This product is for Research Use Only · Not for Human or Veterinary or Therapeutic Use

Tel: 781-999-4286 E_mail: info@targetmol.com Address: 34 Washington Street, Wellesley Hills, MA 02481