

KS-58

## Chemical Properties

CAS No. : 2549046-46-8

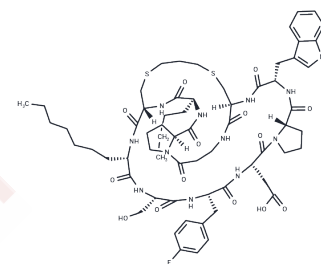
Formula: C64H89FN12O14S2

Molecular Weight: 1333.59

Keep away from moisture

Storage: Powder: -20°C for 3 years | In solvent: -80°C for 1 year

Actual storage temperature shall be subject to the COA.



## Biological Description

Description	KS-58 is a derivative of KRpep-2d. It acts as an inhibitory peptide for K-Ras(G12D), selectively binding to K-Ras. KS-58 is capable of penetrating cells and interrupts the interaction between intracellular Ras and effector proteins. It inhibits the proliferation of tumor cells and exhibits antitumor activity.
Targets(IC50)	Ras

## Preparing Stock Solutions

	1mg	5mg	10mg
1 mM	0.7499 mL	3.7493 mL	7.4986 mL
5 mM	0.150 mL	0.7499 mL	1.4997 mL
10 mM	0.075 mL	0.3749 mL	0.7499 mL
50 mM	0.015 mL	0.075 mL	0.150 mL

Please select the appropriate solvent to prepare the stock solution, according to the solubility of the product in different solvents. Please use it as soon as possible.

Note: The dilution table applies only to solid products. For liquid products, please calculate the stock solution based on the stated concentration and/or density.

**Inhibitor · Natural Compounds · Compound Libraries · Recombinant Proteins**

This product is for Research Use Only · Not for Human or Veterinary or Therapeutic Use

Tel:781-999-4286

E\_mail:info@targetmol.com

Address:34 Washington Street,Wellesley Hills,MA 02481