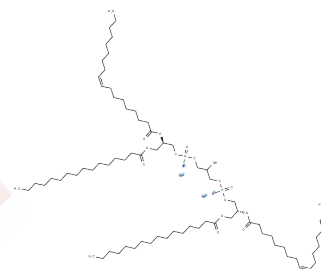


Cardiolipin (16:0/18:1/16:0/18:1) sodium

Chemical Properties

CAS No. : 2260669-35-8
 Formula: C77H144Na2O17P2
 Molecular Weight: 1449.88
 Storage: Powder: -20°C for 3 years | In solvent: -80°C for 1 year
 Actual storage temperature shall be subject to the COA.



Biological Description

Description	Cardiolipin (16:0/18:1/16:0/18:1) (16:0-18:1 Cardiolipin) sodium is an anionic phospholipid composed of long-chain fatty acid palmitic acid and monounsaturated fatty acid oleic acid. This compound can be utilized in the synthesis of nanodisk lipid bilayers for in situ mass spectrometry applications.
Targets(IC50)	Others

Preparing Stock Solutions

	1mg	5mg	10mg
1 mM	0.6897 mL	3.4486 mL	6.8971 mL
5 mM	0.1379 mL	0.6897 mL	1.3794 mL
10 mM	0.069 mL	0.3449 mL	0.6897 mL
50 mM	0.0138 mL	0.069 mL	0.1379 mL

Please select the appropriate solvent to prepare the stock solution, according to the solubility of the product in different solvents. Please use it as soon as possible.

Note: The dilution table applies only to solid products. For liquid products, please calculate the stock solution based on the stated concentration and/or density.

Inhibitor · Natural Compounds · Compound Libraries · Recombinant Proteins

This product is for Research Use Only · Not for Human or Veterinary or Therapeutic Use

Tel:781-999-4286 E_mail:info@targetmol.com Address:34 Washington Street,Wellesley Hills,MA 02481