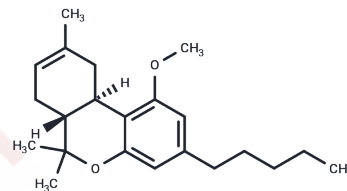


Δ8-THC methyl ether

Chemical Properties

CAS No. : 1451-20-3
 Formula: C₂₂H₃₂O₂
 Molecular Weight: 328.49
 Storage: Powder: -20°C for 3 years | In solvent: -80°C for 1 year
Actual storage temperature shall be subject to the COA.



Biological Description

Description	Δ8-THC methyl ether (compound 3) demonstrates a strong docking score of -10.167 kcal/mol for the CB2 receptor. Additionally, Δ8-THC methyl ether exhibits antinociceptive activity in mice.
Targets(IC50)	Cannabinoid Receptor

Preparing Stock Solutions

	1mg	5mg	10mg
1 mM	3.0442 mL	15.2212 mL	30.4423 mL
5 mM	0.6088 mL	3.0442 mL	6.0885 mL
10 mM	0.3044 mL	1.5221 mL	3.0442 mL
50 mM	0.0609 mL	0.3044 mL	0.6088 mL

Please select the appropriate solvent to prepare the stock solution, according to the solubility of the product in different solvents. Please use it as soon as possible.

Note: The dilution table applies only to solid products. For liquid products, please calculate the stock solution based on the stated concentration and/or density.

Inhibitor · Natural Compounds · Compound Libraries · Recombinant Proteins

This product is for Research Use Only · Not for Human or Veterinary or Therapeutic Use

Tel: 781-999-4286 E_mail: info@targetmol.com Address: 34 Washington Street, Wellesley Hills, MA 02481