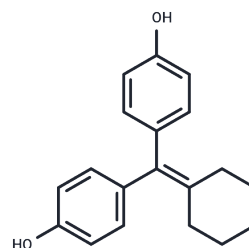


4,4'-(Cyclohexylidenemethylene)diphenol

Chemical Properties

CAS No. :	5189-40-2
Formula:	C19H20O2
Molecular Weight:	280.36
Storage:	Powder: -20°C for 3 years In solvent: -80°C for 1 year Actual storage temperature shall be subject to the COA.



Biological Description

Description	4,4'-(Cyclohexylidenemethylene)diphenol (Compound 2) is a symmetrical cyclic non-steroidal estrogen. It exhibits high binding affinity to estrogen receptors ER α and ER β .
Targets(IC50)	Estrogen Receptor/ERR

Preparing Stock Solutions

	1mg	5mg	10mg
1 mM	3.5668 mL	17.8342 mL	35.6684 mL
5 mM	0.7134 mL	3.5668 mL	7.1337 mL
10 mM	0.3567 mL	1.7834 mL	3.5668 mL
50 mM	0.0713 mL	0.3567 mL	0.7134 mL

Please select the appropriate solvent to prepare the stock solution, according to the solubility of the product in different solvents. Please use it as soon as possible.

Note: The dilution table applies only to solid products. For liquid products, please calculate the stock solution based on the stated concentration and/or density.

Inhibitor · Natural Compounds · Compound Libraries · Recombinant Proteins

This product is for Research Use Only · Not for Human or Veterinary or Therapeutic Use

Tel:781-999-4286 E_mail:info@targetmol.com Address:34 Washington Street,Wellesley Hills,MA 02481