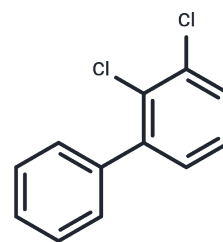


## 2,3-Dichlorobiphenyl

## Chemical Properties

CAS No. :	16605-91-7
Formula:	C <sub>12</sub> H <sub>8</sub> Cl <sub>2</sub>
Molecular Weight:	223.1
Storage:	Powder: -20°C for 3 years   In solvent: -80°C for 1 year Actual storage temperature shall be subject to the COA.



## Biological Description

Description	2,3-Dichlorobiphenyl is a type of polychlorinated biphenyl (PCB) known for its ability to disrupt endocrine systems, impacting the gonadal differentiation in <i>Xenopus laevis</i> .
Targets(IC50)	Others

## Preparing Stock Solutions

	1mg	5mg	10mg
1 mM	4.4823 mL	22.4115 mL	44.8229 mL
5 mM	0.8965 mL	4.4823 mL	8.9646 mL
10 mM	0.4482 mL	2.2411 mL	4.4823 mL
50 mM	0.0896 mL	0.4482 mL	0.8965 mL

Please select the appropriate solvent to prepare the stock solution, according to the solubility of the product in different solvents. Please use it as soon as possible.

Note: The dilution table applies only to solid products. For liquid products, please calculate the stock solution based on the stated concentration and/or density.

Inhibitor · Natural Compounds · Compound Libraries · Recombinant Proteins

This product is for Research Use Only · Not for Human or Veterinary or Therapeutic Use

Tel:781-999-4286 E\_mail:info@targetmol.com Address:34 Washington Street,Wellesley Hills,MA 02481