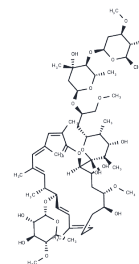


## Isoapoptolidin

## Chemical Properties

CAS No. :	476647-30-0
Formula:	C58H96O21
Molecular Weight:	1129.385
Storage:	Powder: -20°C for 3 years   In solvent: -80°C for 1 year Actual storage temperature shall be subject to the COA.



## Biological Description

Description	Isoapoptolidin is a stable derivative of apoptolidin that demonstrates 10-fold reduced F1FO-ATP synthase inhibitory activity compared to apoptolidin (IC50s = 17 and 0.7 $\mu$ M, respectively).
Targets(IC50)	Others

## Solubility Information

Solubility	Methanol: Soluble DMSO: Soluble Ethanol: Soluble DMF: Soluble ( $< 1$ mg/ml refers to the product slightly soluble or insoluble)
------------	--

## Preparing Stock Solutions

	1mg	5mg	10mg
1 mM	0.8854 mL	4.4272 mL	8.8543 mL
5 mM	0.1771 mL	0.8854 mL	1.7709 mL
10 mM	0.0885 mL	0.4427 mL	0.8854 mL
50 mM	0.0177 mL	0.0885 mL	0.1771 mL

Please select the appropriate solvent to prepare the stock solution, according to the solubility of the product in different solvents. Please use it as soon as possible.

Note: The dilution table applies only to solid products. For liquid products, please calculate the stock solution based on the stated concentration and/or density.

**Inhibitor · Natural Compounds · Compound Libraries · Recombinant Proteins**

This product is for Research Use Only · Not for Human or Veterinary or Therapeutic Use

Tel:781-999-4286 E\_mail:info@targetmol.com Address:34 Washington Street,Wellesley Hills,MA 02481