

LH 1

## Chemical Properties

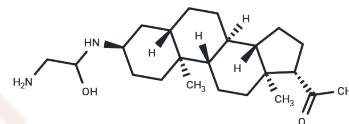
CAS No. : 67190-52-7

Formula: C<sub>23</sub>H<sub>40</sub>N<sub>2</sub>O<sub>2</sub>

Molecular Weight: 376.58

Storage: Powder: -20°C for 3 years | In solvent: -80°C for 1 year

Actual storage temperature shall be subject to the COA.



## Biological Description

Description	LH 1 is an immunostimulant used in antitumor treatment.
Targets(IC50)	Others

## Preparing Stock Solutions

	1mg	5mg	10mg
1 mM	2.6555 mL	13.2774 mL	26.5548 mL
5 mM	0.5311 mL	2.6555 mL	5.311 mL
10 mM	0.2655 mL	1.3277 mL	2.6555 mL
50 mM	0.0531 mL	0.2655 mL	0.5311 mL

Please select the appropriate solvent to prepare the stock solution, according to the solubility of the product in different solvents. Please use it as soon as possible.

Note: The dilution table applies only to solid products. For liquid products, please calculate the stock solution based on the stated concentration and/or density.

### Reference

Blockeel C, Knez J, Polyzos NP, De Vos M, Camus M, Tournaye H. Should an intrauterine insemination with donor semen be performed 1 or 2 days after the spontaneous LH rise? A prospective RCT. *Hum Reprod.* 2014 Apr;29(4):697-703. doi: 10.1093/humrep/deu022. Epub 2014 Feb 18. PubMed PMID: 24549212.

Bagchi D, Andrade J, Shupnik MA. A new role for wilms tumor protein 1: differential activities of + KTS and -KTS variants to regulate LH $\beta$  transcription. *PLoS One.* 2015 Jan 24;10(1):e0116825. doi: 10.1371/journal.pone.0116825. eCollection 2015. PubMed PMID: 25617744; PubMed Central PMCID: PMC4305298.

Lai CH, Teng JF, Hsu TH, Lin FY, Yang PW, Lo HC. 28-day oral safety evaluation of extracellular polysaccharopeptides produced in submerged culture from the turkey tail medicinal mushroom *Trametes versicolor* (L.:Fr.) Pilát LH-1 in mice. *Int J Med Mushrooms.* 2011;13(3):227-36. PubMed PMID: 22135874.

Godbert S, Miro F, Shreeves C, Gnoth C, Johnson S. Comparison between the different methods developed for determining the onset of the LH surge in urine during the human menstrual cycle. *Arch Gynecol Obstet.* 2015 Nov;292(5):1153-61. doi: 10.1007/s00404-015-3732-z. Epub 2015 May 5. PubMed PMID: 25940356.

**Inhibitor · Natural Compounds · Compound Libraries · Recombinant Proteins**

This product is for Research Use Only · Not for Human or Veterinary or Therapeutic Use

Tel:781-999-4286 E\_mail:info@targetmol.com Address:34 Washington Street,Wellesley Hills,MA 02481