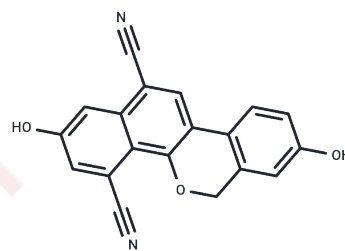


WAY-214156

Chemical Properties

CAS No. : 1007853-40-8
 Formula: C₁₉H₁₀N₂O₃
 Molecular Weight: 314.29
 Storage: Powder: -20°C for 3 years | In solvent: -80°C for 1 year
 Actual storage temperature shall be subject to the COA.



Biological Description

Description	WAY-214156 is a selective ERbeta compound.
Targets(IC50)	Estrogen Receptor/ERR

Preparing Stock Solutions

	1mg	5mg	10mg
1 mM	3.1818 mL	15.9089 mL	31.8177 mL
5 mM	0.6364 mL	3.1818 mL	6.3635 mL
10 mM	0.3182 mL	1.5909 mL	3.1818 mL
50 mM	0.0636 mL	0.3182 mL	0.6364 mL

Please select the appropriate solvent to prepare the stock solution, according to the solubility of the product in different solvents. Please use it as soon as possible.

Note: The dilution table applies only to solid products. For liquid products, please calculate the stock solution based on the stated concentration and/or density.

Inhibitor · Natural Compounds · Compound Libraries · Recombinant Proteins

This product is for Research Use Only · Not for Human or Veterinary or Therapeutic Use

Tel:781-999-4286 E_mail:info@targetmol.com Address:34 Washington Street,Wellesley Hills,MA 02481