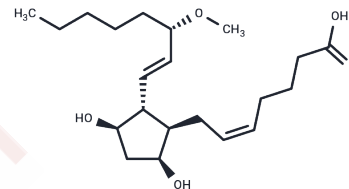


## Pgf2alpha 15-methyl ether

## Chemical Properties

CAS No. :	40834-96-6
Formula:	C <sub>21</sub> H <sub>36</sub> O <sub>5</sub>
Molecular Weight:	368.51
Storage:	Powder: -20°C for 3 years   In solvent: -80°C for 1 year Actual storage temperature shall be subject to the COA.



## Biological Description

Description	Pgf2alpha 15-methyl ether is primarily used for the prevention of postpartum hemorrhage.
-------------	--

## Preparing Stock Solutions

	1mg	5mg	10mg
1 mM	2.7136 mL	13.5682 mL	27.1363 mL
5 mM	0.5427 mL	2.7136 mL	5.4273 mL
10 mM	0.2714 mL	1.3568 mL	2.7136 mL
50 mM	0.0543 mL	0.2714 mL	0.5427 mL

Please select the appropriate solvent to prepare the stock solution, according to the solubility of the product in different solvents. Please use it as soon as possible.

Note: The dilution table applies only to solid products. For liquid products, please calculate the stock solution based on the stated concentration and/or density.

Inhibitor · Natural Compounds · Compound Libraries · Recombinant Proteins

This product is for Research Use Only · Not for Human or Veterinary or Therapeutic Use

Tel:781-999-4286 E\_mail:info@targetmol.com Address:34 Washington Street,Wellesley Hills,MA 02481