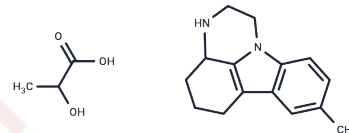


Pirlindole lactate

Chemical Properties

CAS No. :	292039-20-4
Formula:	C ₁₈ H ₂₄ N ₂ O ₃
Molecular Weight:	316.4
Storage:	Powder: -20°C for 3 years In solvent: -80°C for 1 year Actual storage temperature shall be subject to the COA.



Biological Description

Description	Pirlindole, a reversible inhibitor of monoamine oxidase A (RIMA), was developed and is used as an antidepressant in Russia. It is structurally and pharmacologically related to metralindole. Pirlindole has been approved for the treatment of depression in several European and non-European countries. Due to extensive first-pass effects, its absolute bioavailability ranges from 20% to 30%. When administered orally, the T _{max} in rats varies from 2.5 to 6 hours, while in dogs it ranges from 0.8 to 2 hours.
-------------	--

Preparing Stock Solutions

	1mg	5mg	10mg
1 mM	3.1606 mL	15.8028 mL	31.6056 mL
5 mM	0.6321 mL	3.1606 mL	6.3211 mL
10 mM	0.3161 mL	1.5803 mL	3.1606 mL
50 mM	0.0632 mL	0.3161 mL	0.6321 mL

Please select the appropriate solvent to prepare the stock solution, according to the solubility of the product in different solvents. Please use it as soon as possible.

Note: The dilution table applies only to solid products. For liquid products, please calculate the stock solution based on the stated concentration and/or density.

Inhibitor · Natural Compounds · Compound Libraries · Recombinant Proteins

This product is for Research Use Only · Not for Human or Veterinary or Therapeutic Use

Tel: 781-999-4286 E_mail: info@targetmol.com Address: 34 Washington Street, Wellesley Hills, MA 02481