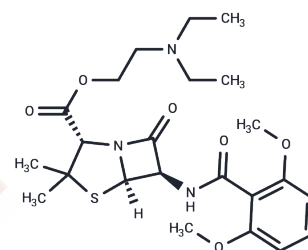


## Tamethicillin

## Chemical Properties

CAS No. : 56211-43-9  
 Formula: C<sub>23</sub>H<sub>33</sub>N<sub>3</sub>O<sub>6</sub>S  
 Molecular Weight: 479.59  
 Storage: Powder: -20°C for 3 years | In solvent: -80°C for 1 year  
 Actual storage temperature shall be subject to the COA.



## Biological Description

Description	Tamethicillin is an ester prodrug of methicillin (MET) that is converted to MET in the body by non-specific esterases.
-------------	------------------------------------------------------------------------------------------------------------------------

## Preparing Stock Solutions

	1mg	5mg	10mg
1 mM	2.0851 mL	10.4256 mL	20.8511 mL
5 mM	0.417 mL	2.0851 mL	4.1702 mL
10 mM	0.2085 mL	1.0426 mL	2.0851 mL
50 mM	0.0417 mL	0.2085 mL	0.417 mL

Please select the appropriate solvent to prepare the stock solution, according to the solubility of the product in different solvents. Please use it as soon as possible.

Note: The dilution table applies only to solid products. For liquid products, please calculate the stock solution based on the stated concentration and/or density.

Inhibitor · Natural Compounds · Compound Libraries · Recombinant Proteins

This product is for Research Use Only · Not for Human or Veterinary or Therapeutic Use

Tel: 781-999-4286 E\_mail: info@targetmol.com Address: 34 Washington Street, Wellesley Hills, MA 02481