

PPI-1040

Chemical Properties

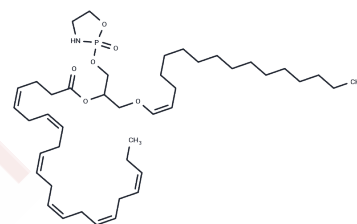
CAS No. : 1436673-69-6

Formula: C43H72NO6P

Molecular Weight: 730.01

Storage: Powder: -20°C for 3 years | In solvent: -80°C for 1 year

Actual storage temperature shall be subject to the COA.



Biological Description

Description	PPI-1040 is an innovative ethyl ether phospholipid compound. When used concurrently with the same dosage of the ether lipid precursor PPI-1011, it does not effectively elevate phospholipid levels or reduce hyperactivity. Conversely, treatment with PPI-1040 effectively normalizes hyperactive behavior in mice.
-------------	---

Preparing Stock Solutions

	1mg	5mg	10mg
1 mM	1.3698 mL	6.8492 mL	13.6984 mL
5 mM	0.274 mL	1.3698 mL	2.7397 mL
10 mM	0.137 mL	0.6849 mL	1.3698 mL
50 mM	0.0274 mL	0.137 mL	0.274 mL

Please select the appropriate solvent to prepare the stock solution, according to the solubility of the product in different solvents. Please use it as soon as possible.

Note: The dilution table applies only to solid products. For liquid products, please calculate the stock solution based on the stated concentration and/or density.

Inhibitor · Natural Compounds · Compound Libraries · Recombinant Proteins

This product is for Research Use Only · Not for Human or Veterinary or Therapeutic Use

Tel: 781-999-4286 E_mail: info@targetmol.com Address: 34 Washington Street, Wellesley Hills, MA 02481