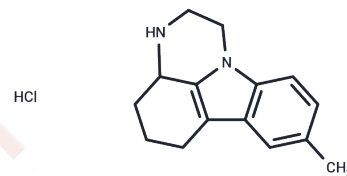


Pirlindole HCl

Chemical Properties

CAS No. :	16154-78-2
Formula:	C ₁₅ H ₁₉ ClN ₂
Molecular Weight:	262.78
Storage:	Powder: -20°C for 3 years In solvent: -80°C for 1 year Actual storage temperature shall be subject to the COA.



Biological Description

Description	Pirlindole, a reversible inhibitor of monoamine oxidase A (RIMA), has been developed and used primarily as an antidepressant compound in Russia. Structurally and pharmacologically, it is similar to metralindole. Pirlindole has received approval for the treatment of depression in several European and non-European countries. Its oral absolute bioavailability ranges from 20% to 30%, mainly due to significant first-pass metabolism. In rats, the oral T _{max} varies between 2.5 and 6 hours, while in dogs, it ranges from 0.8 to 2 hours.
-------------	--

Preparing Stock Solutions

	1mg	5mg	10mg
1 mM	3.8055 mL	19.0273 mL	38.0546 mL
5 mM	0.7611 mL	3.8055 mL	7.6109 mL
10 mM	0.3805 mL	1.9027 mL	3.8055 mL
50 mM	0.0761 mL	0.3805 mL	0.7611 mL

Please select the appropriate solvent to prepare the stock solution, according to the solubility of the product in different solvents. Please use it as soon as possible.

Note: The dilution table applies only to solid products. For liquid products, please calculate the stock solution based on the stated concentration and/or density.

Inhibitor · Natural Compounds · Compound Libraries · Recombinant Proteins

This product is for Research Use Only · Not for Human or Veterinary or Therapeutic Use

Tel: 781-999-4286 E_mail: info@targetmol.com Address: 34 Washington Street, Wellesley Hills, MA 02481