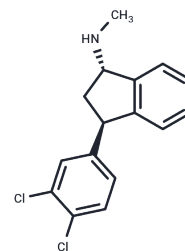


Lu 19005

Chemical Properties

CAS No. : 97229-15-7
 Formula: C₁₆H₁₅Cl₂N
 Molecular Weight: 292.2
 Storage: Powder: -20°C for 3 years | In solvent: -80°C for 1 year
 Actual storage temperature shall be subject to the COA.



Biological Description

Description	Lu 19005 is a potent inhibitor of dopamine, serotonin, and norepinephrine uptake.
-------------	---

Preparing Stock Solutions

	1mg	5mg	10mg
1 mM	3.4223 mL	17.1116 mL	34.2231 mL
5 mM	0.6845 mL	3.4223 mL	6.8446 mL
10 mM	0.3422 mL	1.7112 mL	3.4223 mL
50 mM	0.0684 mL	0.3422 mL	0.6845 mL

Please select the appropriate solvent to prepare the stock solution, according to the solubility of the product in different solvents. Please use it as soon as possible.

Note: The dilution table applies only to solid products. For liquid products, please calculate the stock solution based on the stated concentration and/or density.

Inhibitor · Natural Compounds · Compound Libraries · Recombinant Proteins

This product is for Research Use Only · Not for Human or Veterinary or Therapeutic Use

Tel: 781-999-4286 E_mail: info@targetmol.com Address: 34 Washington Street, Wellesley Hills, MA 02481