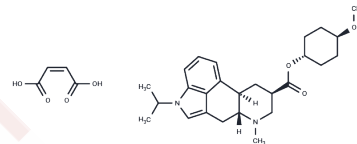


Sergolexole maleate

Chemical Properties

CAS No. : 108674-87-9
 Formula: C₃₀H₄₀N₂O₇
 Molecular Weight: 540.65
 Storage: Powder: -20°C for 3 years | In solvent: -80°C for 1 year
 Actual storage temperature shall be subject to the COA.



Biological Description

Description	Sergolexole is an ergot alkaloid ester compound structurally similar to amesergide, exhibiting potent and highly selective antagonist activity at the 5-HT ₂ receptor.
-------------	---

Preparing Stock Solutions

	1mg	5mg	10mg
1 mM	1.8496 mL	9.2481 mL	18.4963 mL
5 mM	0.3699 mL	1.8496 mL	3.6993 mL
10 mM	0.185 mL	0.9248 mL	1.8496 mL
50 mM	0.037 mL	0.185 mL	0.3699 mL

Please select the appropriate solvent to prepare the stock solution, according to the solubility of the product in different solvents. Please use it as soon as possible.

Note: The dilution table applies only to solid products. For liquid products, please calculate the stock solution based on the stated concentration and/or density.

Inhibitor · Natural Compounds · Compound Libraries · Recombinant Proteins

This product is for Research Use Only · Not for Human or Veterinary or Therapeutic Use

Tel: 781-999-4286 E_mail: info@targetmol.com Address: 34 Washington Street, Wellesley Hills, MA 02481