

## Janelia Fluor 635, Maleimide

### Chemical Properties

CAS No. :

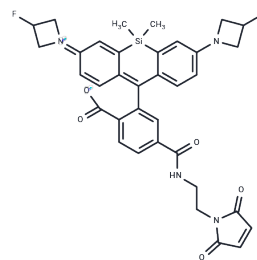
Formula: C<sub>35</sub>H<sub>32</sub>F<sub>2</sub>N<sub>4</sub>O<sub>5</sub>Si

Molecular Weight: 654.74

Keep away from direct sunlight

Storage: Powder: -20°C for 3 years | In solvent: -80°C for 1 year

Actual storage temperature shall be subject to the COA.



### Biological Description

Description	Janelia Fluor 635, Maleimide is a red fluorescent dye equipped with a maleimide functional group (thiol-reactive) for conjugation, making it suitable for live-cell imaging.
Targets(IC50)	Others

### Preparing Stock Solutions

	1mg	5mg	10mg
1 mM	1.5273 mL	7.6366 mL	15.2732 mL
5 mM	0.3055 mL	1.5273 mL	3.0546 mL
10 mM	0.1527 mL	0.7637 mL	1.5273 mL
50 mM	0.0305 mL	0.1527 mL	0.3055 mL

Please select the appropriate solvent to prepare the stock solution, according to the solubility of the product in different solvents. Please use it as soon as possible.

Note: The dilution table applies only to solid products. For liquid products, please calculate the stock solution based on the stated concentration and/or density.

**Inhibitor · Natural Compounds · Compound Libraries · Recombinant Proteins**

This product is for Research Use Only · Not for Human or Veterinary or Therapeutic Use

Tel:781-999-4286 E\_mail:info@targetmol.com Address:34 Washington Street,Wellesley Hills,MA 02481