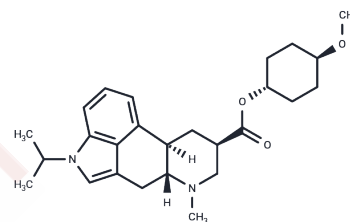


## Sergolexole

## Chemical Properties

CAS No. : 108674-86-8  
 Formula: C<sub>26</sub>H<sub>36</sub>N<sub>2</sub>O<sub>3</sub>  
 Molecular Weight: 424.58  
 Storage: Powder: -20°C for 3 years | In solvent: -80°C for 1 year  
 Actual storage temperature shall be subject to the COA.



## Biological Description

|             |  |
|-------------|--|
| Description | Sergolexole is a compound belonging to the ergoline class, closely related to amesergide, and exhibits potent and highly selective antagonistic activity at serotonin 2 receptors. |
|-------------|--|

## Preparing Stock Solutions

|       | 1mg       | 5mg        | 10mg       |
|-------|-----------|------------|------------|
| 1 mM  | 2.3553 mL | 11.7763 mL | 23.5527 mL |
| 5 mM  | 0.4711 mL | 2.3553 mL  | 4.7105 mL  |
| 10 mM | 0.2355 mL | 1.1776 mL  | 2.3553 mL  |
| 50 mM | 0.0471 mL | 0.2355 mL  | 0.4711 mL  |

Please select the appropriate solvent to prepare the stock solution, according to the solubility of the product in different solvents. Please use it as soon as possible.

Note: The dilution table applies only to solid products. For liquid products, please calculate the stock solution based on the stated concentration and/or density.

Inhibitor · Natural Compounds · Compound Libraries · Recombinant Proteins

This product is for Research Use Only · Not for Human or Veterinary or Therapeutic Use

Tel: 781-999-4286 E\_mail: info@targetmol.com Address: 34 Washington Street, Wellesley Hills, MA 02481