

SKLB050

## Chemical Properties

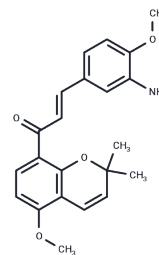
CAS No. :

Formula: C<sub>22</sub>H<sub>23</sub>NO<sub>4</sub>

Molecular Weight: 365.42

Storage: Powder: -20°C for 3 years | In solvent: -80°C for 1 year

Actual storage temperature shall be subject to the COA.



## Biological Description

## Description

SKLB050 is derived from the natural chalcone small molecule millepachine (MIL), which is extracted from the plant [*Millettia pachycarpa*]. SKLB050 exhibits potential antitumor activity both in vitro and in vivo. Biochemical and cellular assays indicate that SKLB050 binds directly and irreversibly to  $\beta$ -tubulin.

## Preparing Stock Solutions

	1mg	5mg	10mg
1 mM	2.7366 mL	13.6829 mL	27.3658 mL
5 mM	0.5473 mL	2.7366 mL	5.4732 mL
10 mM	0.2737 mL	1.3683 mL	2.7366 mL
50 mM	0.0547 mL	0.2737 mL	0.5473 mL

Please select the appropriate solvent to prepare the stock solution, according to the solubility of the product in different solvents. Please use it as soon as possible.

Note: The dilution table applies only to solid products. For liquid products, please calculate the stock solution based on the stated concentration and/or density.

**Inhibitor · Natural Compounds · Compound Libraries · Recombinant Proteins**

This product is for Research Use Only · Not for Human or Veterinary or Therapeutic Use

Tel:781-999-4286

E\_mail:info@targetmol.com

Address:34 Washington Street,Wellesley Hills,MA 02481