

EMD-132338

Chemical Properties

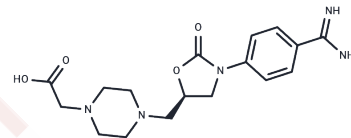
CAS No. : 167364-01-4

Formula: C₁₇H₂₃N₅O₄

Molecular Weight: 361.4

Storage: Powder: -20°C for 3 years | In solvent: -80°C for 1 year

Actual storage temperature shall be subject to the COA.



Biological Description

Description	EMD 132338 is a GPIIb/IIIa antagonist.
Targets(IC50)	Integrin

Preparing Stock Solutions

	1mg	5mg	10mg
1 mM	2.767 mL	13.8351 mL	27.6702 mL
5 mM	0.5534 mL	2.767 mL	5.534 mL
10 mM	0.2767 mL	1.3835 mL	2.767 mL
50 mM	0.0553 mL	0.2767 mL	0.5534 mL

Please select the appropriate solvent to prepare the stock solution, according to the solubility of the product in different solvents. Please use it as soon as possible.

Note: The dilution table applies only to solid products. For liquid products, please calculate the stock solution based on the stated concentration and/or density.

Inhibitor · Natural Compounds · Compound Libraries · Recombinant Proteins

This product is for Research Use Only · Not for Human or Veterinary or Therapeutic Use

Tel:781-999-4286 E_mail:info@targetmol.com Address:34 Washington Street,Wellesley Hills,MA 02481