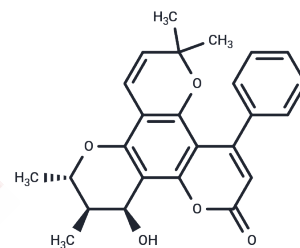


## Soulattrolide

## Chemical Properties

CAS No. :	65025-62-9
Formula:	C <sub>25</sub> H <sub>24</sub> O <sub>5</sub>
Molecular Weight:	404.46
Storage:	Powder: -20°C for 3 years   In solvent: -80°C for 1 year Actual storage temperature shall be subject to the COA.



## Biological Description

Description	Soulattrolide, a naturally occurring coumarin synthesized by Calophyllum (Calophyllaceae) rainforest tree leaves, acts as a potent inhibitor of reverse transcriptase from HIV-1 (RT-HIV-1) and exhibits activity against Mycobacterium tuberculosis.
-------------	---

## Preparing Stock Solutions

	1mg	5mg	10mg
1 mM	2.4724 mL	12.3622 mL	24.7243 mL
5 mM	0.4945 mL	2.4724 mL	4.9449 mL
10 mM	0.2472 mL	1.2362 mL	2.4724 mL
50 mM	0.0494 mL	0.2472 mL	0.4945 mL

Please select the appropriate solvent to prepare the stock solution, according to the solubility of the product in different solvents. Please use it as soon as possible.

Note: The dilution table applies only to solid products. For liquid products, please calculate the stock solution based on the stated concentration and/or density.

**Inhibitor · Natural Compounds · Compound Libraries · Recombinant Proteins**

This product is for Research Use Only · Not for Human or Veterinary or Therapeutic Use

Tel: 781-999-4286 E\_mail: info@targetmol.com Address: 34 Washington Street, Wellesley Hills, MA 02481