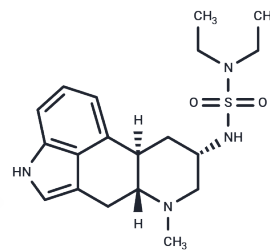


Etisulergine

Chemical Properties

CAS No. : 64795-23-9
 Formula: C₁₉H₂₈N₄O₂S
 Molecular Weight: 376.52
 Storage: Powder: -20°C for 3 years | In solvent: -80°C for 1 year
 Actual storage temperature shall be subject to the COA.



Biological Description

| | |
|-------------|--|
| Description | Etisulergine (CQ 32-084) is a derivative of ergot. |
|-------------|--|

Preparing Stock Solutions

| | 1mg | 5mg | 10mg |
|-------|-----------|------------|-----------|
| 1 mM | 2.6559 mL | 13.2795 mL | 26.559 mL |
| 5 mM | 0.5312 mL | 2.6559 mL | 5.3118 mL |
| 10 mM | 0.2656 mL | 1.328 mL | 2.6559 mL |
| 50 mM | 0.0531 mL | 0.2656 mL | 0.5312 mL |

Please select the appropriate solvent to prepare the stock solution, according to the solubility of the product in different solvents. Please use it as soon as possible.

Note: The dilution table applies only to solid products. For liquid products, please calculate the stock solution based on the stated concentration and/or density.

Inhibitor · Natural Compounds · Compound Libraries · Recombinant Proteins

This product is for Research Use Only · Not for Human or Veterinary or Therapeutic Use

Tel: 781-999-4286 E_mail: info@targetmol.com Address: 34 Washington Street, Wellesley Hills, MA 02481