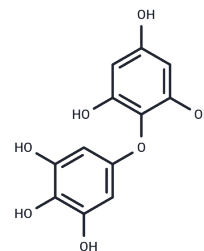


Bifupalol

Chemical Properties

CAS No. : 53254-99-2
 Formula: C₁₂H₁₀O₇
 Molecular Weight: 266.2
 Storage: Powder: -20°C for 3 years | In solvent: -80°C for 1 year
 Actual storage temperature shall be subject to the COA.



Biological Description

Description	BIFUHALOL is a polyphenolic tannin identified in <i>S. latissima</i> .
-------------	--

Preparing Stock Solutions

	1mg	5mg	10mg
1 mM	3.7566 mL	18.7829 mL	37.5657 mL
5 mM	0.7513 mL	3.7566 mL	7.5131 mL
10 mM	0.3757 mL	1.8783 mL	3.7566 mL
50 mM	0.0751 mL	0.3757 mL	0.7513 mL

Please select the appropriate solvent to prepare the stock solution, according to the solubility of the product in different solvents. Please use it as soon as possible.

Note: The dilution table applies only to solid products. For liquid products, please calculate the stock solution based on the stated concentration and/or density.

Inhibitor · Natural Compounds · Compound Libraries · Recombinant Proteins

This product is for Research Use Only · Not for Human or Veterinary or Therapeutic Use

Tel:781-999-4286 E_mail:info@targetmol.com Address:34 Washington Street,Wellesley Hills,MA 02481