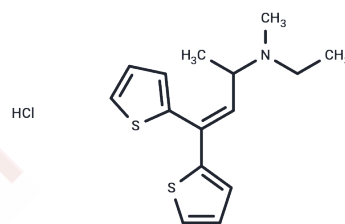


Ethylmethylthiambutene HCl

Chemical Properties

CAS No. :	64037-50-9
Formula:	C ₁₅ H ₂₀ ClNS ₂
Molecular Weight:	313.91
Storage:	Powder: -20°C for 3 years In solvent: -80°C for 1 year Actual storage temperature shall be subject to the COA.



Biological Description

Description	Ethylmethylthiambutene is a potent analgesic with efficacy comparable to morphine and shares similar addictive properties.
-------------	--

Preparing Stock Solutions

	1mg	5mg	10mg
1 mM	3.1856 mL	15.9281 mL	31.8563 mL
5 mM	0.6371 mL	3.1856 mL	6.3713 mL
10 mM	0.3186 mL	1.5928 mL	3.1856 mL
50 mM	0.0637 mL	0.3186 mL	0.6371 mL

Please select the appropriate solvent to prepare the stock solution, according to the solubility of the product in different solvents. Please use it as soon as possible.

Note: The dilution table applies only to solid products. For liquid products, please calculate the stock solution based on the stated concentration and/or density.

Inhibitor · Natural Compounds · Compound Libraries · Recombinant Proteins

This product is for Research Use Only · Not for Human or Veterinary or Therapeutic Use

Tel: 781-999-4286 E_mail: info@targetmol.com Address: 34 Washington Street, Wellesley Hills, MA 02481