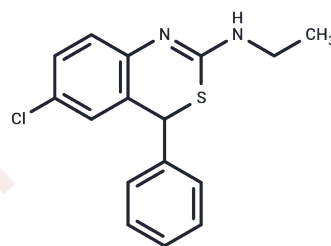


Etasuline

Chemical Properties

CAS No. :	16781-39-8
Formula:	C ₁₆ H ₁₅ ClN ₂ S
Molecular Weight:	302.82
Storage:	Powder: -20°C for 3 years In solvent: -80°C for 1 year <small>Actual storage temperature shall be subject to the COA.</small>



Biological Description

Description	Etasuline is a psychoactive compound.
-------------	---------------------------------------

Preparing Stock Solutions

	1mg	5mg	10mg
1 mM	3.3023 mL	16.5115 mL	33.0229 mL
5 mM	0.6605 mL	3.3023 mL	6.6046 mL
10 mM	0.3302 mL	1.6511 mL	3.3023 mL
50 mM	0.066 mL	0.3302 mL	0.6605 mL

Please select the appropriate solvent to prepare the stock solution, according to the solubility of the product in different solvents. Please use it as soon as possible.

Note: The dilution table applies only to solid products. For liquid products, please calculate the stock solution based on the stated concentration and/or density.

Inhibitor · Natural Compounds · Compound Libraries · Recombinant Proteins

This product is for Research Use Only · Not for Human or Veterinary or Therapeutic Use

Tel:781-999-4286 E_mail:info@targetmol.com Address:34 Washington Street,Wellesley Hills,MA 02481