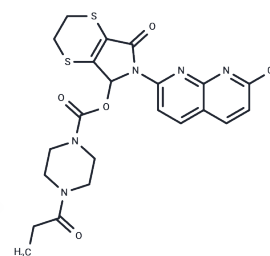


## Suproclone

## Chemical Properties

CAS No. : 76535-71-2  
 Formula: C<sub>22</sub>H<sub>22</sub>ClN<sub>5</sub>O<sub>4</sub>S<sub>2</sub>  
 Molecular Weight: 520.02  
 Storage: Powder: -20°C for 3 years | In solvent: -80°C for 1 year  
 Actual storage temperature shall be subject to the COA.



## Biological Description

Description	Suproclone, a member of the cyclopyrrolone compound class, functions as a sedative and anxiolytic. Its mechanism of action involves the modulation of GABAA receptors to achieve its calming and anti-anxiety effects.
-------------	--

## Preparing Stock Solutions

	1mg	5mg	10mg
1 mM	1.923 mL	9.615 mL	19.230 mL
5 mM	0.3846 mL	1.923 mL	3.846 mL
10 mM	0.1923 mL	0.9615 mL	1.923 mL
50 mM	0.0385 mL	0.1923 mL	0.3846 mL

Please select the appropriate solvent to prepare the stock solution, according to the solubility of the product in different solvents. Please use it as soon as possible.

Note: The dilution table applies only to solid products. For liquid products, please calculate the stock solution based on the stated concentration and/or density.

Inhibitor · Natural Compounds · Compound Libraries · Recombinant Proteins

This product is for Research Use Only · Not for Human or Veterinary or Therapeutic Use

Tel: 781-999-4286 E\_mail: info@targetmol.com Address: 34 Washington Street, Wellesley Hills, MA 02481