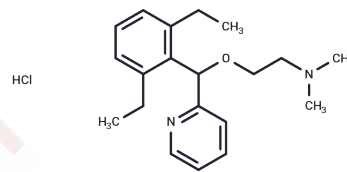


Pytamine HCl

Chemical Properties

CAS No. :	641-35-0
Formula:	C ₂₀ H ₂₉ ClN ₂ O
Molecular Weight:	348.91
Storage:	Powder: -20°C for 3 years In solvent: -80°C for 1 year Actual storage temperature shall be subject to the COA.



Biological Description

Description	Pytamine is a nitroamine derivative that belongs to the benzylpyridine class and possesses diuretic activity.
-------------	---

Preparing Stock Solutions

	1mg	5mg	10mg
1 mM	2.8661 mL	14.3303 mL	28.6607 mL
5 mM	0.5732 mL	2.8661 mL	5.7321 mL
10 mM	0.2866 mL	1.433 mL	2.8661 mL
50 mM	0.0573 mL	0.2866 mL	0.5732 mL

Please select the appropriate solvent to prepare the stock solution, according to the solubility of the product in different solvents. Please use it as soon as possible.

Note: The dilution table applies only to solid products. For liquid products, please calculate the stock solution based on the stated concentration and/or density.

Inhibitor · Natural Compounds · Compound Libraries · Recombinant Proteins

This product is for Research Use Only · Not for Human or Veterinary or Therapeutic Use

Tel:781-999-4286 E_mail:info@targetmol.com Address:34 Washington Street,Wellesley Hills,MA 02481