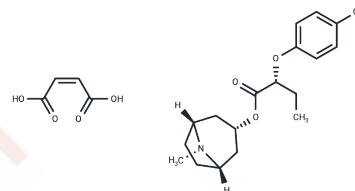


SM21 R-isomer maleate

Chemical Properties

CAS No. : 155156-22-2
 Formula: C₂₂H₂₈ClNO₇
 Molecular Weight: 453.91
 Storage: Powder: -20°C for 3 years | In solvent: -80°C for 1 year
 Actual storage temperature shall be subject to the COA.



Biological Description

Description	SM 21 is an analgesic with a presynaptic cholinergic mode of action.
-------------	--

Preparing Stock Solutions

	1mg	5mg	10mg
1 mM	2.2031 mL	11.0154 mL	22.0308 mL
5 mM	0.4406 mL	2.2031 mL	4.4062 mL
10 mM	0.2203 mL	1.1015 mL	2.2031 mL
50 mM	0.0441 mL	0.2203 mL	0.4406 mL

Please select the appropriate solvent to prepare the stock solution, according to the solubility of the product in different solvents. Please use it as soon as possible.

Note: The dilution table applies only to solid products. For liquid products, please calculate the stock solution based on the stated concentration and/or density.

Inhibitor · Natural Compounds · Compound Libraries · Recombinant Proteins

This product is for Research Use Only · Not for Human or Veterinary or Therapeutic Use

Tel: 781-999-4286 E_mail: info@targetmol.com Address: 34 Washington Street, Wellesley Hills, MA 02481