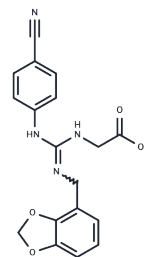


Lugduname

Chemical Properties

CAS No. :	180045-75-4
Formula:	C ₁₈ H ₁₆ N ₄ O ₄
Molecular Weight:	352.34
Storage:	Powder: -20°C for 3 years In solvent: -80°C for 1 year <small>Actual storage temperature shall be subject to the COA.</small>



Biological Description

Description	Lugduname is recognized as one of the most potent sweeteners known. Its sweetness is estimated to be 220,000 to 300,000 times greater than that of sucrose, though estimates vary among different studies. Lugduname belongs to a family of powerful sweeteners that contain acetate groups linked with guanidine groups.
-------------	---

Preparing Stock Solutions

	1mg	5mg	10mg
1 mM	2.8382 mL	14.1908 mL	28.3817 mL
5 mM	0.5676 mL	2.8382 mL	5.6763 mL
10 mM	0.2838 mL	1.4191 mL	2.8382 mL
50 mM	0.0568 mL	0.2838 mL	0.5676 mL

Please select the appropriate solvent to prepare the stock solution, according to the solubility of the product in different solvents. Please use it as soon as possible.

Note: The dilution table applies only to solid products. For liquid products, please calculate the stock solution based on the stated concentration and/or density.

Inhibitor · Natural Compounds · Compound Libraries · Recombinant Proteins

This product is for Research Use Only · Not for Human or Veterinary or Therapeutic Use

Tel: 781-999-4286 E_mail: info@targetmol.com Address: 34 Washington Street, Wellesley Hills, MA 02481