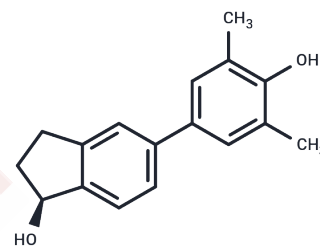


## PaPE-1

## Chemical Properties

CAS No. : 2107327-36-4  
 Formula: C<sub>17</sub>H<sub>18</sub>O<sub>2</sub>  
 Molecular Weight: 254.32  
 Storage: Powder: -20°C for 3 years | In solvent: -80°C for 1 year  
 Actual storage temperature shall be subject to the COA.



## Biological Description

Description	PaPE-1 is a pathway-preferential estrogen that activates extracellular nuclear signaling pathways without affecting nuclear signaling pathways. It exerts anti-apoptotic effects by inhibiting A $\beta$ -induced caspase activity and reducing chromatin condensation associated with apoptosis, thereby preventing neuronal cell death. Additionally, post-treatment with PaPE-1 decreases the mRNA expression of apoptosis-specific factors (such as Bax, Gsk3b, Fas, and Fasl) under A $\beta$ influence, while upregulating Bcl2 expression.
-------------	---

## Preparing Stock Solutions

	1mg	5mg	10mg
1 mM	3.9321 mL	19.6603 mL	39.3205 mL
5 mM	0.7864 mL	3.9321 mL	7.8641 mL
10 mM	0.3932 mL	1.966 mL	3.9321 mL
50 mM	0.0786 mL	0.3932 mL	0.7864 mL

Please select the appropriate solvent to prepare the stock solution, according to the solubility of the product in different solvents. Please use it as soon as possible.

Note: The dilution table applies only to solid products. For liquid products, please calculate the stock solution based on the stated concentration and/or density.

Inhibitor · Natural Compounds · Compound Libraries · Recombinant Proteins

This product is for Research Use Only · Not for Human or Veterinary or Therapeutic Use

Tel: 781-999-4286 E\_mail: info@targetmol.com Address: 34 Washington Street, Wellesley Hills, MA 02481