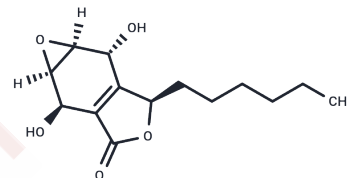


## Integrasone

## Chemical Properties

CAS No. : 689278-00-0  
 Formula: C<sub>14</sub>H<sub>20</sub>O<sub>5</sub>  
 Molecular Weight: 268.31  
 Storage: Powder: -20°C for 3 years | In solvent: -80°C for 1 year  
*Actual storage temperature shall be subject to the COA.*



## Biological Description

Description	INTEGRASONE is a novel polyketide compound derived from an unidentified sporeless mycelium.
-------------	---

## Preparing Stock Solutions

	1mg	5mg	10mg
1 mM	3.727 mL	18.6352 mL	37.2703 mL
5 mM	0.7454 mL	3.727 mL	7.4541 mL
10 mM	0.3727 mL	1.8635 mL	3.727 mL
50 mM	0.0745 mL	0.3727 mL	0.7454 mL

Please select the appropriate solvent to prepare the stock solution, according to the solubility of the product in different solvents. Please use it as soon as possible.

Note: The dilution table applies only to solid products. For liquid products, please calculate the stock solution based on the stated concentration and/or density.

**Inhibitor · Natural Compounds · Compound Libraries · Recombinant Proteins**

This product is for Research Use Only · Not for Human or Veterinary or Therapeutic Use

Tel:781-999-4286 E\_mail:info@targetmol.com Address:34 Washington Street,Wellesley Hills,MA 02481