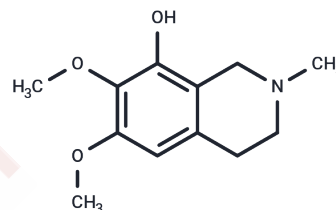


## Anhalidine

## Chemical Properties

|                   |   |
|-------------------|---|
| CAS No. :         | 2245-94-5   |
| Formula:          | C <sub>12</sub> H <sub>17</sub> NO <sub>3</sub>   |
| Molecular Weight: | 223.27  |
| Storage:          | Powder: -20°C for 3 years   In solvent: -80°C for 1 year<br>Actual storage temperature shall be subject to the COA. |



## Biological Description

|             |   |
|-------------|---|
| Description | Anhalidine is an alkaloid extracted from the Mexican "peyote" cactus. |
|-------------|---|

## Preparing Stock Solutions

|       | 1mg       | 5mg        | 10mg       |
|-------|-----------|------------|------------|
| 1 mM  | 4.4789 mL | 22.3944 mL | 44.7888 mL |
| 5 mM  | 0.8958 mL | 4.4789 mL  | 8.9578 mL  |
| 10 mM | 0.4479 mL | 2.2394 mL  | 4.4789 mL  |
| 50 mM | 0.0896 mL | 0.4479 mL  | 0.8958 mL  |

Please select the appropriate solvent to prepare the stock solution, according to the solubility of the product in different solvents. Please use it as soon as possible.

Note: The dilution table applies only to solid products. For liquid products, please calculate the stock solution based on the stated concentration and/or density.

**Inhibitor · Natural Compounds · Compound Libraries · Recombinant Proteins**

This product is for Research Use Only · Not for Human or Veterinary or Therapeutic Use

Tel: 781-999-4286 E\_mail: info@targetmol.com Address: 34 Washington Street, Wellesley Hills, MA 02481