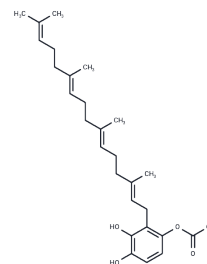


Suillin

Chemical Properties

CAS No. :	103538-03-0
Formula:	C ₂₈ H ₄₀ O ₄
Molecular Weight:	440.62
Storage:	Powder: -20°C for 3 years In solvent: -80°C for 1 year Actual storage temperature shall be subject to the COA.



Biological Description

Description	SUILLIN, an ethyl acetate extract from the mushroom Suillus placidus, was first identified as being capable of inducing apoptosis in HepG2 cells by causing DNA fragmentation. This compound exhibits significant cytotoxicity and antitumor properties, suggesting its potential as an effective treatment for liver cancer.
-------------	---

Preparing Stock Solutions

	1mg	5mg	10mg
1 mM	2.2695 mL	11.3476 mL	22.6953 mL
5 mM	0.4539 mL	2.2695 mL	4.5391 mL
10 mM	0.227 mL	1.1348 mL	2.2695 mL
50 mM	0.0454 mL	0.227 mL	0.4539 mL

Please select the appropriate solvent to prepare the stock solution, according to the solubility of the product in different solvents. Please use it as soon as possible.

Note: The dilution table applies only to solid products. For liquid products, please calculate the stock solution based on the stated concentration and/or density.

Inhibitor · Natural Compounds · Compound Libraries · Recombinant Proteins

This product is for Research Use Only · Not for Human or Veterinary or Therapeutic Use

Tel:781-999-4286 E_mail:info@targetmol.com Address:34 Washington Street,Wellesley Hills,MA 02481