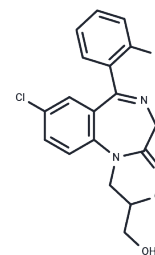


## Proflazepam

## Chemical Properties

|                   |   |
|-------------------|---|
| CAS No. :         | 52829-30-8  |
| Formula:          | C <sub>18</sub> H <sub>16</sub> ClFN <sub>2</sub> O <sub>3</sub>  |
| Molecular Weight: | 362.78  |
| Storage:          | Powder: -20°C for 3 years   In solvent: -80°C for 1 year<br>Actual storage temperature shall be subject to the COA. |



## Biological Description

|             |  |
|-------------|--|
| Description | Proflazepam is a derivative of the benzodiazepine class, exhibiting anticonvulsant and muscle-relaxant properties. |
|-------------|--|

## Preparing Stock Solutions

|       | 1mg       | 5mg        | 10mg       |
|-------|-----------|------------|------------|
| 1 mM  | 2.7565 mL | 13.7825 mL | 27.5649 mL |
| 5 mM  | 0.5513 mL | 2.7565 mL  | 5.513 mL   |
| 10 mM | 0.2756 mL | 1.3782 mL  | 2.7565 mL  |
| 50 mM | 0.0551 mL | 0.2756 mL  | 0.5513 mL  |

Please select the appropriate solvent to prepare the stock solution, according to the solubility of the product in different solvents. Please use it as soon as possible.

Note: The dilution table applies only to solid products. For liquid products, please calculate the stock solution based on the stated concentration and/or density.

**Inhibitor · Natural Compounds · Compound Libraries · Recombinant Proteins**

This product is for Research Use Only · Not for Human or Veterinary or Therapeutic Use

Tel:781-999-4286 E\_mail:info@targetmol.com Address:34 Washington Street,Wellesley Hills,MA 02481