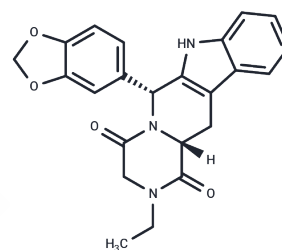


N-Ethyl tadalafil

Chemical Properties

CAS No. :	1609405-34-6
Formula:	C ₂₃ H ₂₁ N ₃ O ₄
Molecular Weight:	403.43
Storage:	Powder: -20°C for 3 years In solvent: -80°C for 1 year Actual storage temperature shall be subject to the COA.



Biological Description

Description	N-Ethyl tadalafil (NEthyl tadalafil) is a CGMP-specific 3',5'-cyclic phosphodiesterase (PDE) inhibitor used in the study of cardiovascular diseases such as angina pectoris, hypertension, and pulmonary hypertension.
Targets(IC50)	PDE

Solubility Information

Solubility	DMSO: 1 mg/mL(3.11 mM),Sonication is recommended. (< 1 mg/ml refers to the product slightly soluble or insoluble)
------------	--

Preparing Stock Solutions

	1mg	5mg	10mg
1 mM	2.4787 mL	12.3937 mL	24.7874 mL
5 mM	0.4957 mL	2.4787 mL	4.9575 mL
10 mM	0.2479 mL	1.2394 mL	2.4787 mL
50 mM	0.0496 mL	0.2479 mL	0.4957 mL

Please select the appropriate solvent to prepare the stock solution, according to the solubility of the product in different solvents. Please use it as soon as possible.

Note: The dilution table applies only to solid products. For liquid products, please calculate the stock solution based on the stated concentration and/or density.

Reference

Kern SE, et al. Isolation and structural characterization of a new tadalafil analog (chloropropanoylpretadalafil) found in a dietary supplement. J Pharm Biomed Anal. 2016 Sep 5;128:360-366.

Inhibitor · Natural Compounds · Compound Libraries · Recombinant Proteins

This product is for Research Use Only · Not for Human or Veterinary or Therapeutic Use

Tel:781-999-4286 E_mail:info@targetmol.com Address:34 Washington Street,Wellesley Hills,MA 02481