

Fibrinopeptide A, human acetate

Chemical Properties

CAS No. :

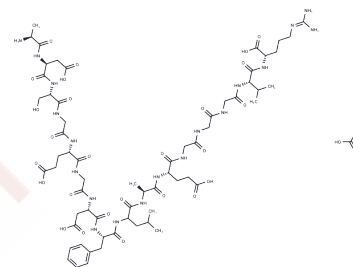
Formula: C65H101N19O28

Molecular Weight: 1596.65

Keep away from moisture

Storage: Powder: -20°C for 3 years | In solvent: -80°C for 1 year

Actual storage temperature shall be subject to the COA.



Biological Description

Description	Fibrinopeptide A, human acetate (Human fibrinopeptide A acetate) is a 16-residue short polypeptide cleaved from fibrinogen by thrombin. Fibrinopeptide A (FPA) is produced from the N-terminal A α region of fibrinogen protein, on cleavage by thrombin.
Targets(IC50)	Others
In vitro	The conversion of monomeric fibrinogen into polymeric fibrin is mediated by thrombin, which binds to the central region of fibrinogen and catalyzes cleavage of the 2 short peptides, the 16-residue fibrinopeptide A (FpA) and the 14-residue fibrinopeptide B (FpB), located at the NH ₂ -termini of the A α and B β chains, respectively[1].
In vivo	Fibrinopeptide A (FPA) is a small polypeptide cleaved from fibrinogen by thrombin, has a short half-life, and is considered a sensitive biochemical marker of thrombin activity, fibrin generation, and ongoing thrombosis[2].

Solubility Information

Solubility	DMSO: 5 mM, Sonication is recommended. (< 1 mg/ml refers to the product slightly soluble or insoluble)
------------	---

Preparing Stock Solutions

	1mg	5mg	10mg
1 mM	0.6263 mL	3.1316 mL	6.2631 mL
5 mM	0.1253 mL	0.6263 mL	1.2526 mL
10 mM	0.0626 mL	0.3132 mL	0.6263 mL
50 mM	0.0125 mL	0.0626 mL	0.1253 mL

Please select the appropriate solvent to prepare the stock solution, according to the solubility of the product in different solvents. Please use it as soon as possible.

Note: The dilution table applies only to solid products. For liquid products, please calculate the stock solution based on the stated concentration and/or density.

Reference

Riedel T, et al. Fibrinopeptides A and B release in the process of surface fibrin formation. Blood. 2011 Feb 3;117(5): 1700-6.

Inhibitor · Natural Compounds · Compound Libraries · Recombinant Proteins

This product is for Research Use Only · Not for Human or Veterinary or Therapeutic Use

Tel:781-999-4286 E_mail:info@targetmol.com Address:34 Washington Street,Wellesley Hills,MA 02481