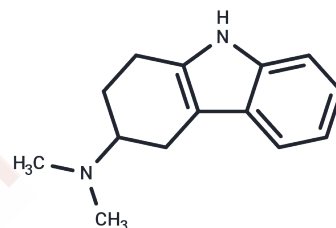


Cyclindole

Chemical Properties

CAS No. : 32211-97-5
 Formula: C₁₄H₁₈N₂
 Molecular Weight: 214.31
 Storage: Powder: -20°C for 3 years | In solvent: -80°C for 1 year
 Actual storage temperature shall be subject to the COA.



Biological Description

Description	Cyclindole is an antipsychotic with a tricyclic structure that was never marketed. It displaces spiperone binding in vitro and elevates dopamine levels in the striatum, indicating it acts as a D ₂ receptor antagonist.
Targets(IC50)	Others

Preparing Stock Solutions

	1mg	5mg	10mg
1 mM	4.6661 mL	23.3307 mL	46.6614 mL
5 mM	0.9332 mL	4.6661 mL	9.3323 mL
10 mM	0.4666 mL	2.3331 mL	4.6661 mL
50 mM	0.0933 mL	0.4666 mL	0.9332 mL

Please select the appropriate solvent to prepare the stock solution, according to the solubility of the product in different solvents. Please use it as soon as possible.

Note: The dilution table applies only to solid products. For liquid products, please calculate the stock solution based on the stated concentration and/or density.

Inhibitor · Natural Compounds · Compound Libraries · Recombinant Proteins

This product is for Research Use Only · Not for Human or Veterinary or Therapeutic Use

Tel: 781-999-4286 E_mail: info@targetmol.com Address: 34 Washington Street, Wellesley Hills, MA 02481