

## (S)-Coclaurine

## Chemical Properties

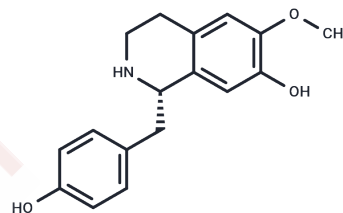
CAS No. : 486-39-5

Formula: C<sub>17</sub>H<sub>19</sub>NO<sub>3</sub>

Molecular Weight: 285.34

Storage: Keep away from direct sunlight, Store under nitrogen  
Powder: -20°C for 3 years | In solvent: -80°C for 1 year

Actual storage temperature shall be subject to the COA.



## Biological Description

Description	(S)-Coclaurine (Coclaurine) is an antagonist of nAChR isolated from <i>Sarcopetalum harveyanum</i> .
Targets(IC50)	AChR
In vitro	(+)-R-Coclaurine shows negative inotropic effects. Coclaurine derivatives and of paeoniflorin derivatives have neuromuscular blocking actions[1].

## Preparing Stock Solutions

	1mg	5mg	10mg
1 mM	3.5046 mL	17.523 mL	35.0459 mL
5 mM	0.7009 mL	3.5046 mL	7.0092 mL
10 mM	0.3505 mL	1.7523 mL	3.5046 mL
50 mM	0.0701 mL	0.3505 mL	0.7009 mL

Please select the appropriate solvent to prepare the stock solution, according to the solubility of the product in different solvents. Please use it as soon as possible.

Note: The dilution table applies only to solid products. For liquid products, please calculate the stock solution based on the stated concentration and/or density.

## Reference

Kimura I, et al. Inotropic effects of (+/-)-higenamine and its chemically related components, (+)-R-coclaurine and (+)-S-reticuline, contained in the traditional sino-Japanese medicines "bushi" and "shin-i" in isolated guinea pig papillary muscle. *Jpn J Pharmacol.* 1989 May;50(1):75-8.

Sowemimo BO, et al. The isolation of stepharine and coclaurine from *Sarcopetalum harveyanum*. *Lloydia.* 1972 Mar;35(1):90-1.

Matthew J. Cheesman . Oceania: Antidepressant Medicinal Plants. *Herbal Medicine in Depression.* 2016, 483-527.

**Inhibitor · Natural Compounds · Compound Libraries · Recombinant Proteins**

This product is for Research Use Only · Not for Human or Veterinary or Therapeutic Use

Tel:781-999-4286 E\_mail:info@targetmol.com Address:34 Washington Street,Wellesley Hills,MA 02481