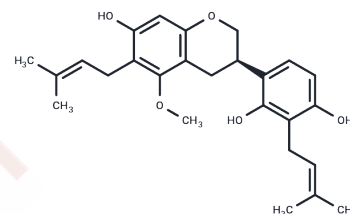


Licoricidin

Chemical Properties

CAS No. :	30508-27-1
Formula:	C ₂₆ H ₃₂ O ₅
Molecular Weight:	424.53
Storage:	Powder: -20°C for 3 years In solvent: -80°C for 1 year Actual storage temperature shall be subject to the COA.



Biological Description

Description	Licoricidin, is a potent anti-metastatic agent, which can markedly inhibit the metastatic and invasive capacity of malignant prostate cancer cells.
Targets(IC50)	Apoptosis, MMP, NF-κB, Akt, ROS, VEGFR
In vitro	This study examined whether HEGU and Licoricidin inhibit metastasis using the 4T1 mammary cancer model. Both HEGU and Licoricidin treatment reduced pulmonary metastasis and the expression of CD45, CD31, HIF-1α, iNOS, COX-2, and VEGF-A in tumor tissues. Additionally, a decrease in protein expression of VEGF-R2, VEGF-C, VEGF-R3, and LYVE-1 was noted in tumor tissues of Licoricidin-treated mice. Furthermore, the blood concentrations of MMP-9, ICAM-1, VCAM-1, and VEGF-A were decreased in HEGU-treated mice. In vitro 4T1 cell culture results showed that both HEGU and Licoricidin inhibited cell migration, MMP-9 secretion, and VCAM expression[1]

Preparing Stock Solutions

	1mg	5mg	10mg
1 mM	2.3555 mL	11.7777 mL	23.5555 mL
5 mM	0.4711 mL	2.3555 mL	4.7111 mL
10 mM	0.2356 mL	1.1778 mL	2.3555 mL
50 mM	0.0471 mL	0.2356 mL	0.4711 mL

Please select the appropriate solvent to prepare the stock solution, according to the solubility of the product in different solvents. Please use it as soon as possible.

Note: The dilution table applies only to solid products. For liquid products, please calculate the stock solution based on the stated concentration and/or density.

Reference

Licoricidin, an Active Compound in the Hexane/Ethanol Extract of Glycyrrhiza uralensis, Inhibits Lung Metastasis of 4T1 Murine Mammary Carcinoma Cells Int J Mol Sci. 2016 Jun 14;17(6). pii: E934

Inhibitor · Natural Compounds · Compound Libraries · Recombinant Proteins

This product is for Research Use Only · Not for Human or Veterinary or Therapeutic Use

Tel:781-999-4286 E_mail:info@targetmol.com Address:34 Washington Street,Wellesley Hills,MA 02481