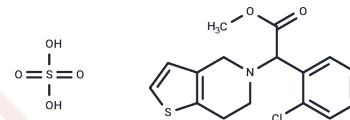


(±) Clopidogrel hydrogen sulfate

Chemical Properties

CAS No. :	135046-48-9
Formula:	C ₁₆ H ₁₆ ClNO ₂ S · H ₂ SO ₄
Molecular Weight:	419.9
Storage:	Powder: -20°C for 3 years In solvent: -80°C for 1 year <i>Actual storage temperature shall be subject to the COA.</i>



Biological Description

Description	(±) Clopidogrel hydrogen sulfate (Iscover) , an antiplatelet agent pharmacologically and structurally analogous to ticlopidine, is used to inhibit blood clots in various conditions such as cerebrovascular disease, peripheral vascular disease, and coronary artery disease.
Targets(IC50)	Others,P2Y Receptor

Solubility Information

Solubility	DMSO: 60 mg/mL (142.89 mM),Sonication is recommended. (< 1 mg/ml refers to the product slightly soluble or insoluble)
In vivo Formulation	10% DMSO+40% PEG300+5% Tween 80+45% Saline: 2 mg/mL (4.76 mM),Sonication is recommended. <i>Please add the solvents sequentially, clarifying the solution as much as possible before adding the next one. Dissolve by heating and/or sonication if necessary. Working solution is recommended to be prepared and used immediately. The formulation provided above is for reference purposes only. In vivo formulations may vary and should be modified based on specific experimental conditions.</i>

Preparing Stock Solutions

	1mg	5mg	10mg
1 mM	2.3815 mL	11.9076 mL	23.8152 mL
5 mM	0.4763 mL	2.3815 mL	4.763 mL
10 mM	0.2382 mL	1.1908 mL	2.3815 mL
50 mM	0.0476 mL	0.2382 mL	0.4763 mL

Please select the appropriate solvent to prepare the stock solution, according to the solubility of the product in different solvents. Please use it as soon as possible.

Note: The dilution table applies only to solid products. For liquid products, please calculate the stock solution based on the stated concentration and/or density.

Reference

Dorsam RT, et al. Hematology. 2003 Dec;8(6):359-65.

Inhibitor · Natural Compounds · Compound Libraries · Recombinant Proteins

This product is for Research Use Only · Not for Human or Veterinary or Therapeutic Use

Tel:781-999-4286 E_mail:info@targetmol.com Address:34 Washington Street,Wellesley Hills,MA 02481